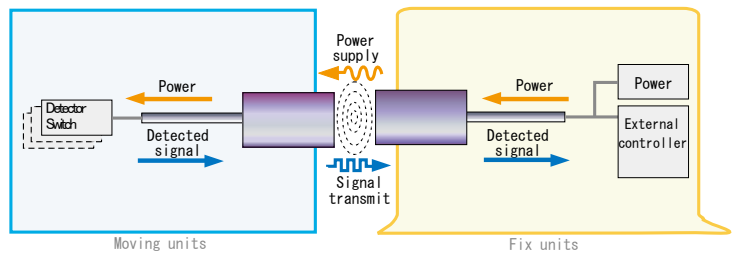


Power supply and 8 detector signal transmission



Standard DC2W detector switch is available

This Remote Sensor System not only supplies power to a DC2W detector switch on moving part , but also transmits its detected signal and outputs it to the controller by NPN or PNP type.



Various numbers of signal transmission are available

1 signal transmission(RP_1)
Size : M12 , M18 , M30



4 signal transmission (RP_4)
Size : M18 , M30

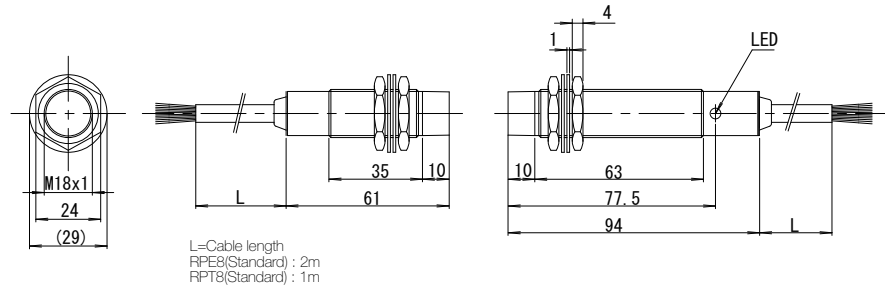


2 signal transmission(RP_2)
Size : M18 , M30



15 signal transmission (RP_15)
Size : M30

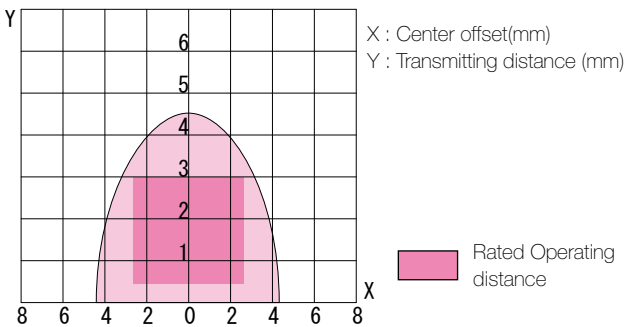
Applicable detector switch
DC-2 wire or Mechanical switch x max.8



L=Cable length
RPE8(Standard) : 2m
RPT8(Standard) : 1m

Type number		NPN	Transmitter	Output sensor
		PNP	RPT8-1803D-PU-01	RPE8-1800N-PU-02
				RPE8-1800P-PU-02
Operating distance			0.5...3mm	---
Drive voltage			12V ± 1.5V DC	---
Drive current			5mA / 1 signal	---
Center offset and Drive current in Operating distance			Operating distance Center offset	
			0.5...3mm +/-2.5mm	
Specification of Output sensor	Output type		---	NPN or PNP
	Supply voltage		---	24V +/- 10%
	Load current		---	max.50mA / 1 signal
	Current consumption		---	<= 400mA
	Frequency of operating cycles		---	60Hz
LED indication			---	Inzone
Specification	Size		M18x1	M18x1
(Output sensor and Transmitter)	Material	Housing	Nickel Plated Brass	Nickel Plated Brass
		Active surface	Nylon 12	Nylon12
	Operating temperature		0...+50 deg.C.	0...+50 deg.C.
Protection class			IP67	IP67

Transmitting diagram(Supply voltage at 24V/non-flush mounted)

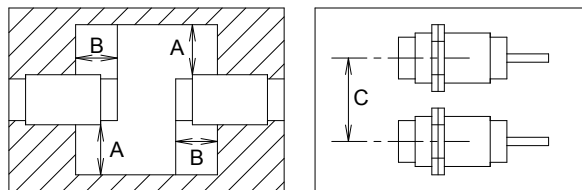


X : Center offset(mm)
Y : Transmitting distance (mm)

Rated Operating distance

Influence of surrounding metal and Mutual interference

In order to avoid mutual interference between parallel-mounted sensors , or to avoid influence of surrounding metal , keep the minimum space as described below.



Type number	A(mm)	B(mm)	C(mm)
RPT8-1803D-PU__	18	18	110
RPE8-1800N/P-PU__			

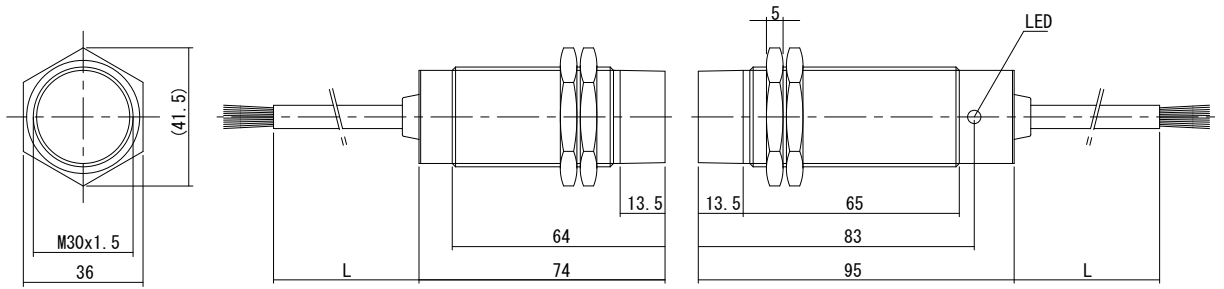
(mm)

Specification of Detector switch

Please sure to use standard switches have rating as the table below.

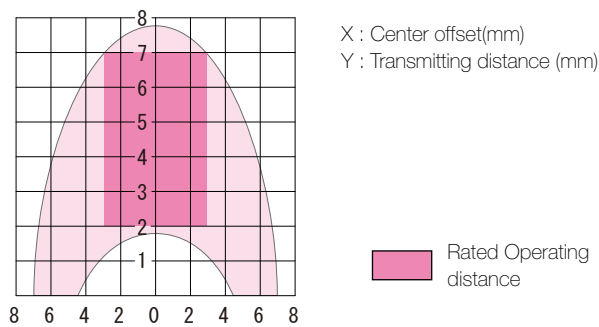
Supply voltage	12VDC
Load current	min 5mA
	max 20mA
Residual voltage	=>3.5V
Leakage current	=<1mA

Applicable detector switch
DC-2 wire or Mechanical switch x max.8



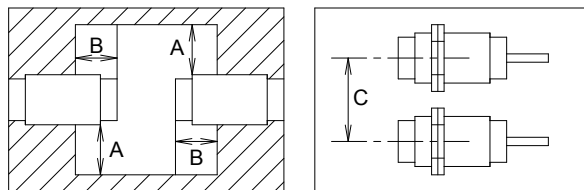
Type number	NPN PNP	Transmitter	RPT8-3007D-PU-01	Output sensor	RPE8-3000N-PU-02 RPE8-3000P-PU-02
Operating distance			2...7mm		---
Drive voltage			22V + 4 -2 V DC		---
Drive current			5mA / 1 signal		---
Center offset and Drive current in Operating distance		Operating distance	Center offset		---
		2...7mm	+/-3mm		---
Specification of Output sensor	Output type		---		NPN or PNP
	Supply voltage		---		24V +/- 10%
	Load current		---		max.50mA / 1signal
	Current consumption		---		=<400mA
	Frequency of operating cycles		---		60Hz
	LED indication		---		Inzone
Specification (Output sensor and Transmitter)	Size		M30x1.5		M30x1.5
	Material	Housing	Nickel Plated Brass		Nickel Plated Brass
		Active surface	Nylon 12		Nylon12
	Operating temperature		0...+50 deg.C.		0...+50 deg.C.
	Protection class		IP67		IP67

Transmitting diagram(Supply voltage at 24V/non-flush mounted)



Influence of surrounding metal and Mutual interference

In order to avoid mutual interference between parallel-mounted sensors , or to avoid influence of surrounding metal , keep the minimum space as described below.



Type number	A(mm)	B(mm)	C(mm)	
RPT8-3007D-PU_	30	20	200	(mm)
RPE8-3000N/P-PU_				

Specification of Detector switch

Please sure to use standard switches have rating as the table below.

Supply voltage	12VDC	
Load current	min	5mA
	max	20mA
Residual voltage	=>3.5V	
Leakage current	=<1mA	

DC2wire Detector type

DC2wire Detector type Remote sensor can be used with DC2W detector switch(standard switch and exclusive proximity switch/RFD series) or mechanical limit switch.

It is also possible to connect both DC2W detector switch and mechanical limit switch simultaneously.



Signal	Operating distance	Size		Size (LxWxH)	Type Number(Standard type)	Type Number(Anti-weld slag type)
1	2mm	M12	Transmitter	M12xL35.5	RPT-1202 D -PU	---
			Output sensor	M12xL61.5	RPE-1202 □ -PU	---
	4mm	M18	Transmitter	M18xL40	RPT-1804 D -PU	RPT-TF1804 D -PU
			Output sensor	M18xL59	RPE-1804 □ -PU	RPE-TF1804 □ -PU
8mm	M30	Transmitter	M30xL49	RPT-3008 D -PU	RPT-TF3008 D -PU	
		Output sensor	M30xL64	RPE-3008 □ -PU	RPE-TF3008 □ -PU	
2	4mm	M18	Transmitter	M18xL46	RPT2-1804 D -PU	RPT2-TF1804 D -PU
			Output sensor	M18xL59	RPE2-1804 □ -PU	RPE2-TF1804 □ -PU
	5mm	M30	Transmitter	M30xL49	RPT2-3005 D -PU	RPT2-TF3005 D -PU
			Output sensor	M30xL64	RPE2-3005 □ -PU	RPE2-TF3005 □ -PU
4	3mm	M18	Transmitter	M18xL61	RPT4-1803 D -PU	RPT4-TF1803 D -PU
			Output sensor	M18xL94	RPE4-1803 □ -PU	RPE4-TF1803 □ -PU
	5mm	M30	Transmitter	M30xL64	RPT4-3005 D -PU	RPT4-TF3005 D -PU
			Output sensor	M30xL95	RPE4-3005 □ -PU	RPE4-TF3005 □ -PU
8	3mm	M18	Transmitter	M18xL61	RPT8-1803 D -PU	RPT8-TF1803 D -PU
			Output sensor	M18xL94	RPE8-1800 □ -PU	RPE8-TF1800 □ -PU
	7mm	M30	Transmitter	M30xL74	RPT8-3007 D -PU	RPT8-TF3007 D -PU
			Output sensor	M30xL95	RPE8-3000 □ -PU	RPE8-TF3000 □ -PU
15	5mm	M30	Transmitter	M30xL74	RPT15-3005 D -PU	RPT15-TF3005 D -PU
			Output sensor	M30xL95	RPE15-3000 □ -PU	RPE15-TF3000 □ -PU

*1 Teflon coat housing and Teflon cap are adopted.

- :N(NPN) or P(PNP)
- Please use the Transmitter and the Output sensor combining the same size and the same specification.
- Please read carefully the user's guide before wiring and installation.

B & PLUS K.K.

274 Gomyo Tokigawa-machi
Hiki-gun Saitama 355-0343 Japan
E-mail : b-plus@b-plus-kk.jp

<http://www.b-plus-kk.jp>

USA Branch

3940 Olympic Blvd. Suite 400
Erlanger, KY 41018
E-mail : b-plus-usa@b-plus-kk.com

<http://www.b-plus-kk.com>

*Specification is subject to change without notice.