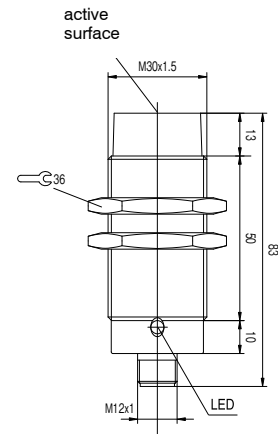
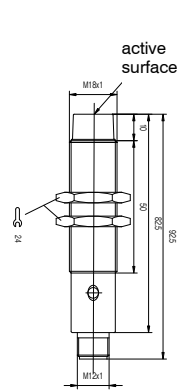
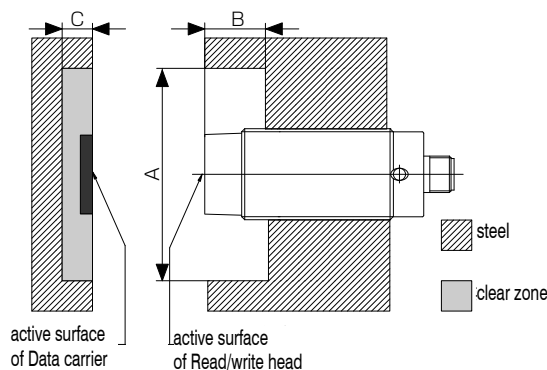


Size	M18	M30
Housing material	Nickel plated brass	Nickel plated brass
Weight	52g	100g

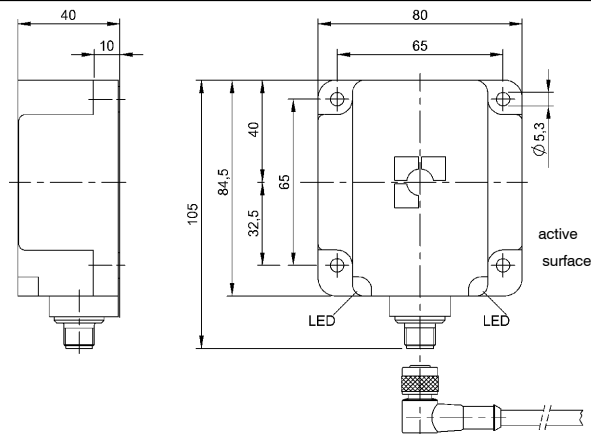


Type		BIS M-302-001-S115						BIS M-300-001-S115											
Mounting in steel		non-flush						non-flush											
Operating temperature range		0... +70°C						0... +70°C											
Storage temperature range		-20... +85°C						-20... +85°C											
Protection class		IP67						IP67											
Connect to		Processor						Processor											
Connection	Connector	Depending on Processor type						Depending on Processor type											
	Cable																		
cable length		5m , 10m (Max.25m)						5m , 10m (Max.25m)											
Applicable carrier		ISO14443(Mifare)		ISO15693				ISO14443(Mifare)			ISO15693								
Type		BIS M-101	BIS M-102	BIS M-122	BIS M-110	BIS M-111	BIS M-112	BIS M-125	BIS M-101	BIS M-102	BIS M-110	BIS M-111	BIS M-112						
Clear zone	Diameter A	>60	>60	>60	>60	>60	>60	>60	>60	>100	>150	>100	>100	>100					
	Depth for R/W head B	>30	>30	>20	>20	>30	>30	>30	>30	>30	>30	>30	>30	>30					
	Depth for R/W head C	>25	>50	>0	>10	>25	>25	>50	0	>16	>25	>50	>25	>25					
Write distance		0-16	0-20	in metal		0-6	0-9	0-16	0-20	0-30	in metal		0-15	0-20	0-22	0-32	0-22	0-28	0-44
Read distance		0-16	0-20	0-6	0-9	0-16	0-20	0-30	0-15	0-20	0-22	0-32	0-22	0-28	0-44				
Offset(mm)	5mm	±10	±18	±2	±3	±8	±12	±20	±9	±12	±15	±20	±14	±16	±25				
	10mm	±8	±14			±6	±10	±18	±7	±10	±15	±20	±12	±14	±24				
	15mm	±7	±12			±4	±10	±18	±5	±10	±15	±20	±12	±14	±24				
	20mm		±4				±5	±16		±5	±12	±20	±10	±14	±24				
	25mm							±8				±14			±22				
	30mm											±10			±22				
	40mm														±16				
	50mm																		
60mm																			
70mm																			

Clear zone



Size	84.5 x 80 x 40
Housing material	PBT + ASA
Weight	190g



Type	BIS M-301-001-S115
------	--------------------

Mounting in metal	non-flush
Operating temperature range	0... +70°C
Storage temperature range	-20... +85°C
Protection class	IP67
Connection	Processor
Connect to	Depending on Processor type
Connector cable	
cable length	5m , 10m (Max.25m)

Applicable Data carrier	Compliance Type	ISO14443(Mifare)				ISO15693		
		BIS M-125	BIS M-101	BIS M-102	BIS M-120	BIS M-110	BIS M-111	BIS M-112
Clear Diameter A		>200	>200	>200	>250	>200	>200	>200
Zone	Depth for R/W head B	>70	>70	>70	>70	>70	>70	>70
	Depth for R/W head C	>40	>50	>50	>80	>50	>50	>50
Write distance		0-28	0-34	0-45	0-50	0-32	0-45	0-70
Read distance		0-28	0-34	0-45	0-50	0-32	0-45	0-70
Offset in mm at distance	5mm	±25	±22	±30	±30	±24	±32	±40
	10mm	±25	±22	±30	±30	±24	±32	±40
	15mm	±25	±22	±30	±30	±24	±32	±40
	20mm	±24	±22	±30	±30	±24	±32	±40
	25mm	±20	±15	±24	±28	±12	±25	±40
	30mm		±15	±24	±28	±12	±25	±40
	40mm			±15	±18		±20	±40
	50mm				±4			±35
60mm							±20	
70mm							±20	

Clear zone

