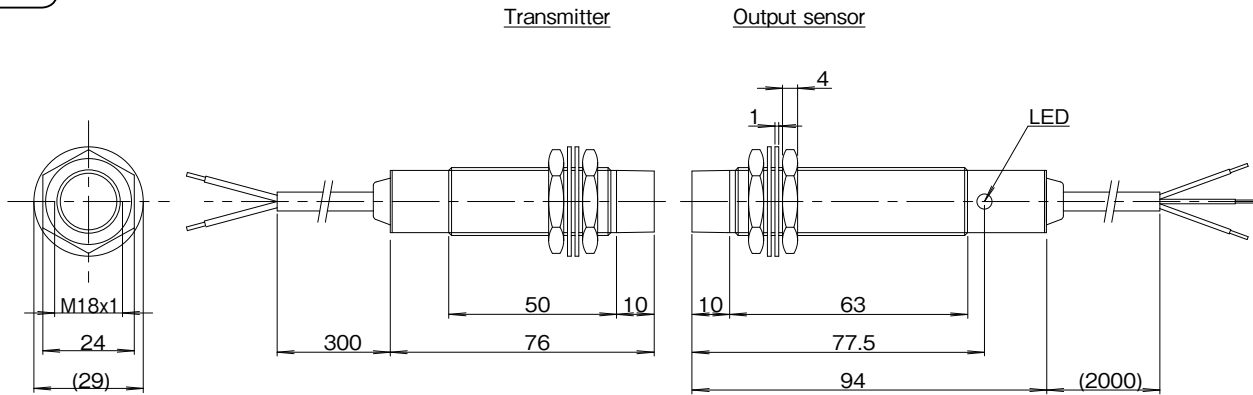


for 1 thermocouple K type / Size : M18

Operating distance
1...4mm



A035

Wiring C014/P.121

Transmitter	
Type Code	Thermocouple K 0...1000°C RTT-1804-K100
Applicable sensor	Thermocouple K type
No. of input signal	1
Measuring range	0...1000°C
Operating distance	1...4mm
Center offset	± 2.5mm
Operating temperature	0...+60°C
Protection class	IP67
Cable	Compensating lead wire 2x0.34mm ² , ellipse 5x3.5mm ²
Material Housing	Nickel plated brass
Active face	Nylon 12
Weight	Body 75 g + Cable 40 g x 1 m
Remarks	

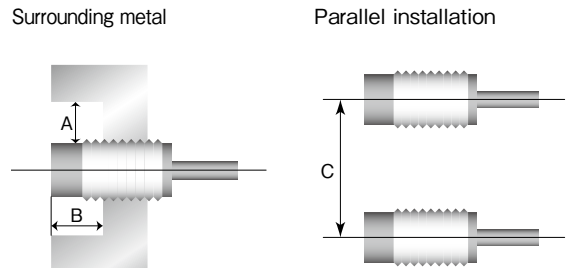
Output sensor	
Type Code	Current output RTE-1804E-PU-02
Operational voltage	24V DC ± 5% (incl. ripple)
Current consumption	≤ 150mA
No. of output signal	1
Output signal	4...20mA
Resolution	0.1%
Response delay	≤ 0.5 sec.
LED	InZone
Operating temperature	0...+60°C
Protection class	IP67
Cable	PUR / Ø5 , 3x0.34mm ²
Material Housing	Nickel plated brass
Active face	Nylon 12
Weight	Body 95 g + Cable 35 g x 2 m
Remarks	

Notes

- Please use thermocouple K type complying to JIS.
- The temperature range is allowed 0...1000 degree C.
- Transmitter compensates the thermal voltage at the standard base temperature and converts to digital databased on this temperature range.
- Output is current source, therefore please connect the load between output and negative.

Installation notes

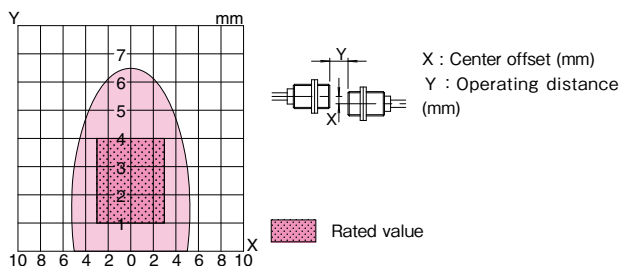
In order to avoid influence of surrounding metal, or to avoid mutual influence between parallel-mounted Transmitters or Output sensors, keep the minimum distances as described below.

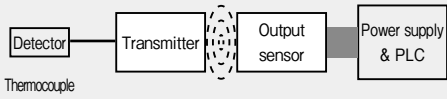


Type Code	A(mm)	B(mm)	C(mm)
RTT-1804-K100	20	15	110
RTE-1804E-PU-__			

Typical Transmitting Diagram (Supply voltage at 24V/non-flush mount)

RTT-1804-K100 / RTE-1804E-PU-__





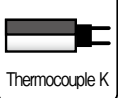
RTT-1804-K
RTE-18

1
signal

Signal type



Sensor type



Remote Sensor

DC 3-wire
detector type

DC 3-wire type
Terminal unit

DC 2-wire
detector type

DC 2-wire type
Terminal unit

Exclusive
detector type

Thermocouple
K type

Resistance
thermometer type

Load cell type

Analog sensor
type

Exclusive sensor

Terminal box
other unit

Wiring

Products for
maintenance

Special spec.

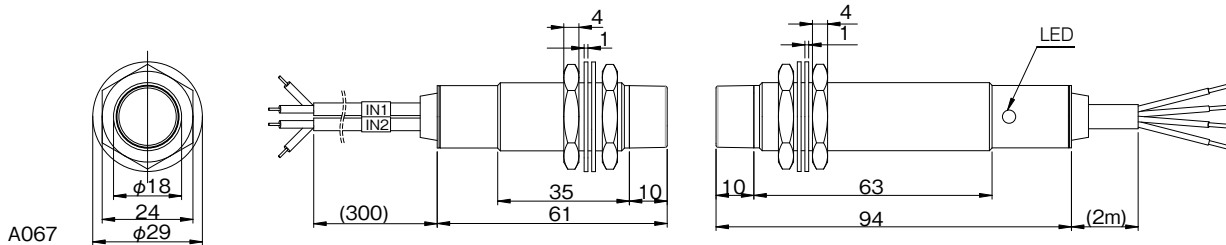
Alphanumeric
product list

for 2 thermocouple K type / Size : M18

Operating distance
1...4mm

Transmitter

Output sensor



2 compensating lead wires Outer diameter : 3.2x5.1mm
color of outer sheath : Blue, VX-G:7/0.3x2

Wiring C015/P.121

Transmitter	
Type	0...1000°C RS02T-018-K1000
Code	0...300°C RS02T-018-K300
Applicable sensor	JIS Thermocouple K
No. of input signal	2 (1CH, 2CH)
Measuring range	0...1000°C or 0...300°C
Compensated cold junction	$\leq \pm 0.5^\circ\text{C}$
Operating distance	1...4mm
Center offset	$\pm 2.5\text{mm}$
Operating temperature	0...+80°C
Protection class	IP67
Cable	Compensating lead wire(JIS) 0.9mm x 2 All heat-resistant vinyl (90°C)
Material Housing	Nickel plated brass
Active face	Nylon 12
Weight	120 g (incl. cable)
Remarks	

Output sensor	
Type	RS02E-018E-PU-02
Code	
Operational voltage	24V DC $\pm 5\%$ (include ripple)
Current consumption	$\leq 150\text{mA}$
No. of output signal	4 ... 20 mA $\times 2$
Load current	$\leq 400 \Omega$
Resolution	$\leq 0.1\%$ FS
Response delay	≤ 0.5 sec.
Linearity	$\leq \pm 0.8\%$ FS
LED	InZone (data valid)
Operating temperature	0...+80°C
Protection class	IP67
Cable	PUR, $\varnothing 5\text{mm}/4 \times 0.25\text{mm}^2$
Material Housing	Nickel plated brass
Active face	Nylon 12
Weight	Body 95g + Cable 30g x 2m
Remarks	

Notes

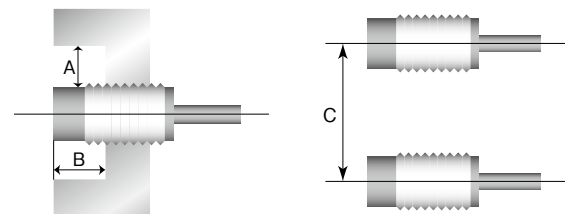
- Please use thermocouple K type complying to JIS.
- The measurement temperature range is within the specifications mentioned above.
- Output is current source, therefore please connect the load between output and negative.

Installation notes

In order to avoid influence of surrounding metal, or to avoid mutual influence between parallel-mounted Transmitters or Output sensors, keep the minimum distances as described below.

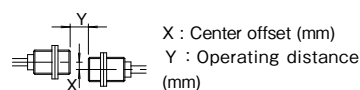
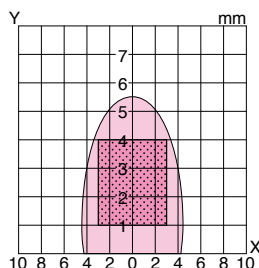
Surrounding metal

Parallel installation



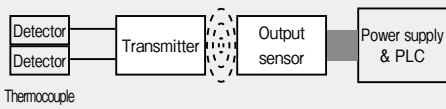
Typical Transmitting Diagram (Supply voltage at 24V/non-flush mount)

RS02T-018-K _ _ _ / RS02E-018E-PU- _ _



Rated value

Type Code	A(mm)	B(mm)	C(mm)
RS02T-018-K1000	20	15	110
RS02T-018-K300			
RS02E-018E-PU- _ _			



RS02T-018K
RS02E-018

RS02T-018J
RS02E-018

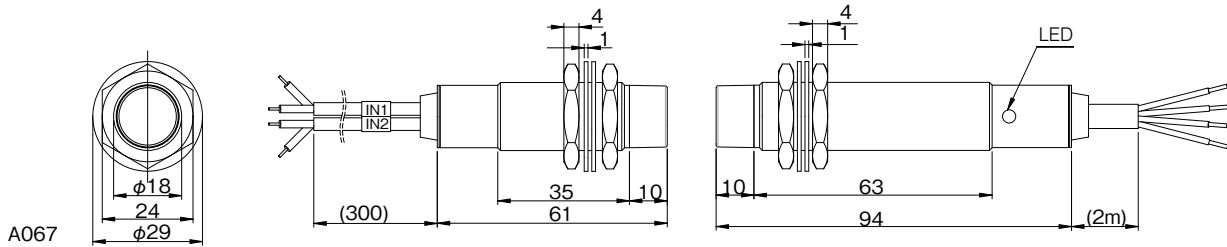
2
signal

for 2 thermocouple J type / Size : M18

Operating distance
1...4mm

Transmitter

Output sensor



2 compensating lead wires Outer diameter : 3.2x5.1mm
color of outer sheath : Yellow, JX-G:7/0.3x2

Wiring C015/P.121

Transmitter	
Type Code	0...300°C RS02T-018-J300
Applicable sensor	JIS Thermocouple J type
No. of input signal	2
Measuring range	0...300°C
Compensated cold junction	$\leq \pm 0.5^\circ\text{C}$
Operating distance	1...4mm
Center offset	$\pm 2.5\text{mm}$
Operating temperature	0...+80°C
Protection class	IP67
Cable	Compensating lead wire(JIS) 0.9mm x 2 All heat-resistant vinyl (90°C)
Material Housing	Nickel plated brass
Active face	Nylon 12
Weight	120 g (incl. cable)
Remarks	

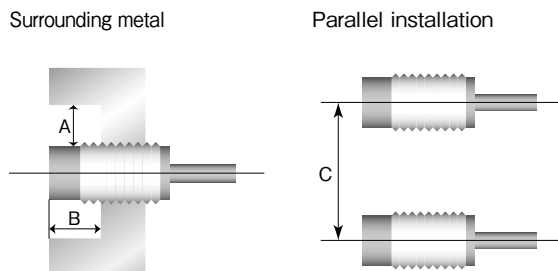
Output sensor	
Type Code	RS02E-018E-PU-02
Operational voltage	24V DC $\pm 5\%$ (include ripple)
Current consumption	$\leq 150\text{mA}$
No. of output signal	4 ... 20 mA $\times 2$
Load current	$\leq 400 \Omega$
Resolution	$\leq 0.1\%$ FS
Response delay	≤ 0.5 sec.
Linearity	$\leq \pm 0.8\%$ FS
LED	InZone (data valid)
Operating temperature	0...+80°C
Protection class	IP67
Cable	PUR, $\varnothing 5\text{mm}/4 \times 0.25\text{mm}^2$
Material Housing	Nickel plated brass
Active face	Nylon 12
Weight	Body 95 g + Cable 30 g x 2m
Remarks	

Notes

- Please use thermocouple J type complying to JIS.
- The measurement temperature range is within the specifications mentioned above.
- Output is current source, therefore please connect the load between output and negative.

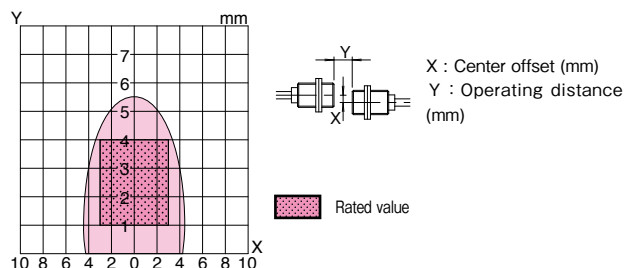
Installation notes

In order to avoid influence of surrounding metal, or to avoid mutual influence between parallel-mounted Transmitters or Output sensors, keep the minimum distances as described below.



Typical Transmitting Diagram (Supply voltage at 24V/non-flush mount)

RS02T-018-J300 / RS02E-018E-PU-__



Signal type
Analog

Sensor type
Thermocouple K · J

Remote Sensor

DC 3-wire detector type

DC 3-wire type Terminal unit

DC 2-wire detector type

DC 2-wire type Terminal unit

Exclusive detector type

Thermocouple K/J type

Resistance thermometer type

Load cell type

Analog sensor type

Exclusive sensor

Terminal box other unit

Wiring

Products for maintenance

Special spec.

Alphanumeric product list