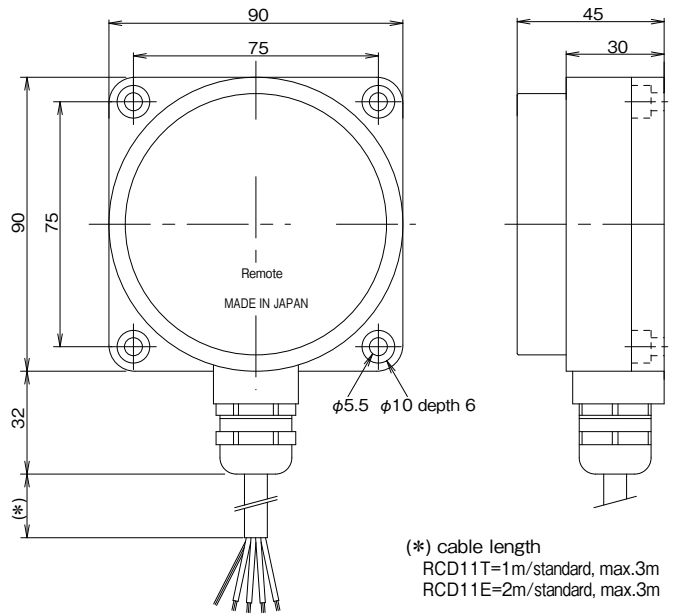


RS-232C / Size : 90 x 90

Operating distance
3...10mm

Remote and Base
shared dimension



(*) cable length
RCD11T=1m/standard, max.3m
RCD11E=2m/standard, max.3m

Wiring	
+24V	Red
0 V	Black
TXD	White
RXD	Green
GND	Shield

A045

Remote	
Type RS-232C Code	RCD11T-211-PU-01
Drive voltage	24V ± 1.5V DC
Drive current	max.1A
Operating distance	3...10mm
Center offset	± 5mm
Drive current	≤ 500mA
Operating temperature	0...+50°C
Protection class	IP67
Cable	PUR / Ø7.6 , 4x0.75mm ² with shield
Material Housing	Aluminum + alumite processing (metal part)
Active face	ABS + PBT (resin part)
Weight	Body 600 g + cable 90 g x 1 m
Remarks	

Base	
Type RS-232C Code	RCD11E-211-PU-02
Operational voltage	24V DC ± 5% (incl. ripple)
Current consumption	≤ 3A
Communication Signal	RS-232C, Full duplex, asynchronous
Speed	4800...38400 bps, without data checking
Delay	≤ 20 μ sec
Operating temperature	0...+50°C
Protection class	IP67
Cable	PUR / Ø7.6 , 4x0.75mm ² with shield
Material Housing	Aluminum + alumite processing (metal part)
Active face	ABS + PBT (resin part)
Weight	Body 620 g + cable 90 g x 2 m
Remarks	

Applicable device

RCD11T can be connected a device with serial RS-232C interface.

Supply voltage	24V DC
Current consumption	≤ 1 A
Residual voltage	---
Load current	---

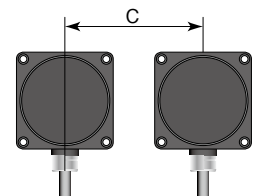
The total of current consumption of all devices connected to Remote must not exceed 1A the drive current.

Installation notes

In order to avoid influence of surrounding metal, or to avoid mutual influence between parallel-mounted Remote and Base, keep the minimum distances as described below.

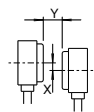
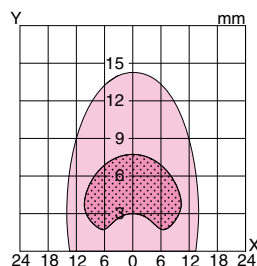
Surrounding metal

Parallel installation



Typical Transmitting Diagram (Supply voltage at 24V/non-flush mount)

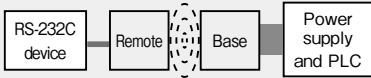
RCD11T-211-PU-__ / RCD11E-211-PU-__



X : Offset (mm)
Y : Operating distance (mm)

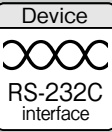
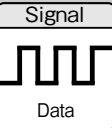
Drive current ≤ 1A
Drive current ≤ 500mA

Type Code	A(mm)	B(mm)	C(mm)
RCD11T-211-PU-__	50	45	300
RCD11E-211-PU-__			



RCD11T
RCD11E

RS-232C



Remote Coupler

4+4
Switch Signal

8+8
Switch Signal

64+32
Switch Signal

RS-232C

CC-Link

DeviceNet