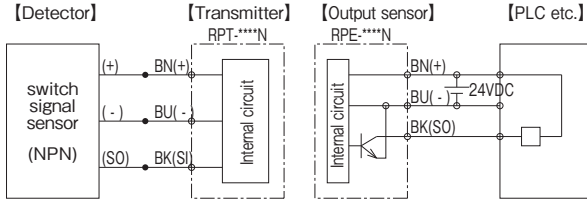


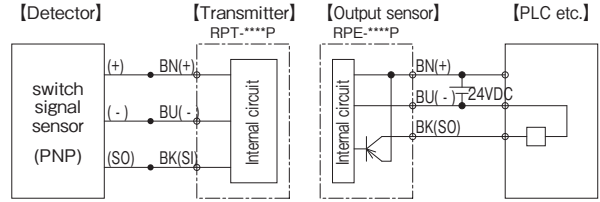
Remote Sensor System

C001 DC 3-wire Detector type No. of signal : 1

RPT-1804_ / RPE-1804_
RPT-3008_ / RPE-3008_



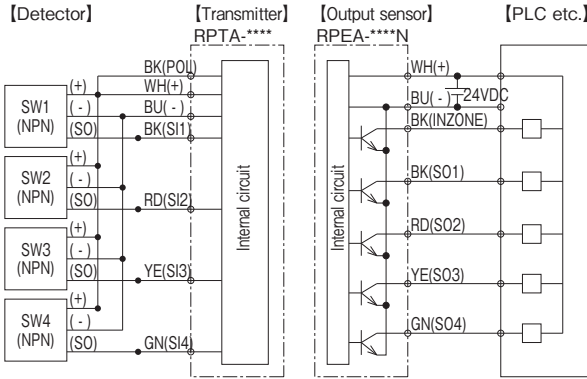
■ PNP



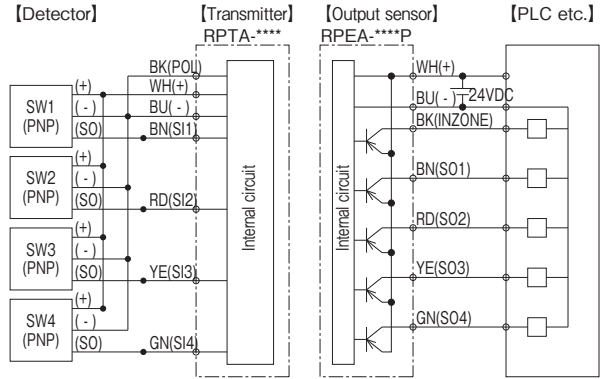
C002 DC 3-wire Detector type No. of signal : 4

RPTA-1803 / RPEA-1803_
RPTA-3005 / RPEA-3005_

■ NPN



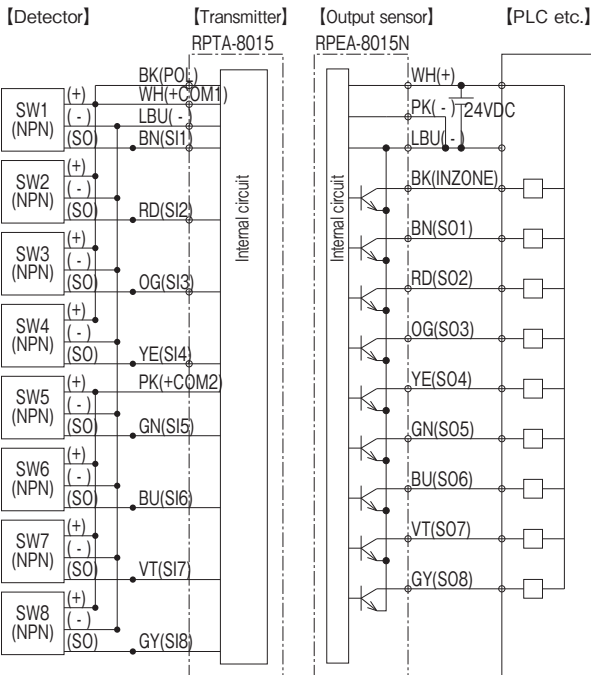
■ PNP



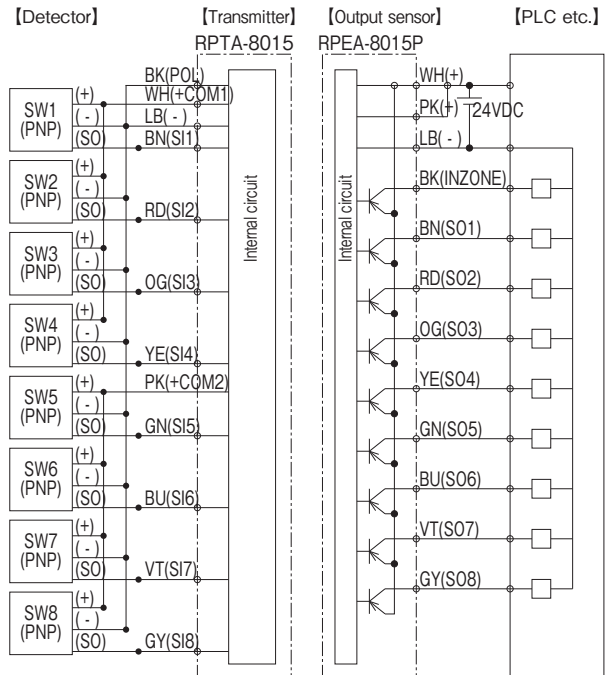
C003 DC 3-wire Detector type No. of signal : 8

RPTA-8015 / RPEA-8015_

■ NPN



PNP type



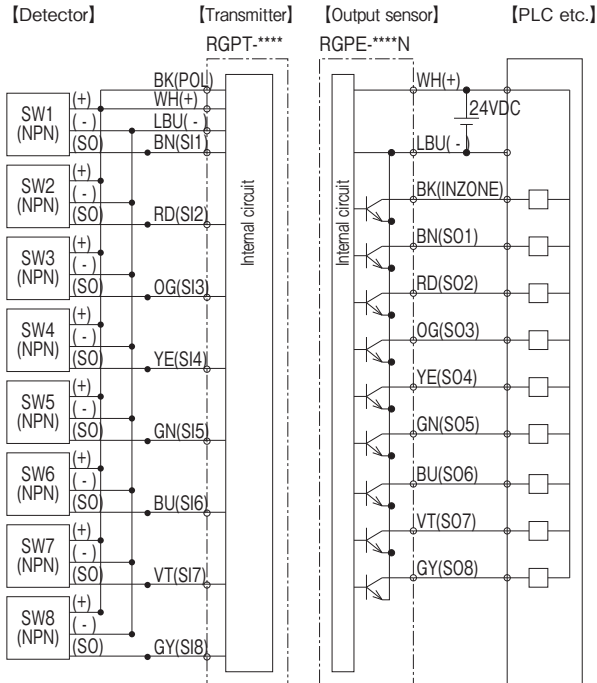
Remote Sensor System

Switch Signal / DC 3-wire Detector type

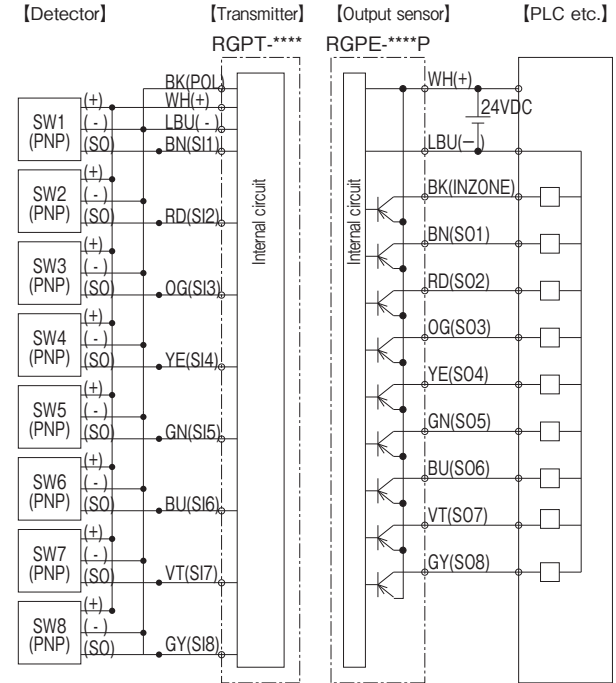
C004 DC 3-wire Detector type No. of signal : 8

RGPT-3005 / RGPE-3005_
 RGPT-4008 / RGPE-4008_
 RGPT-9012 / RGPE-9012_

NPN type

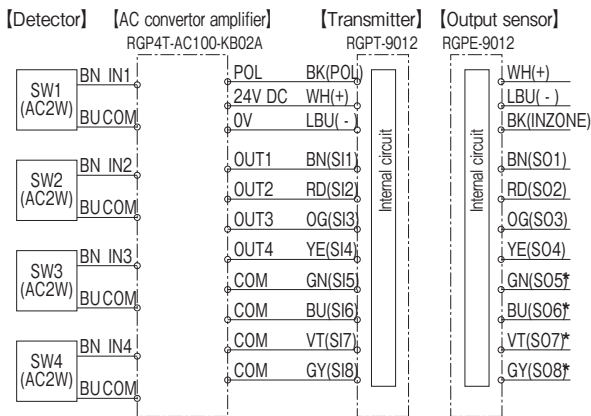


PNP type



C005 AC conversion amplifier No. of signal : 4

RGPT-AC100-KB02A

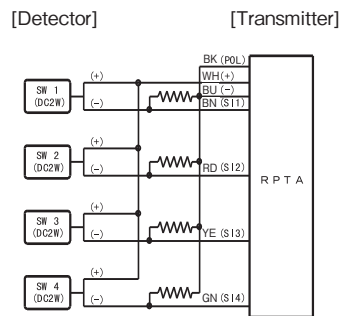


* SO5...SO8 will be ON when Transmitter and Output sensor are operating in Inzone.

Connecting DC2-wire sensor to DC 3-wire Detector type Transmitter

When connecting a DC 2-wire sensor (incl. a mechanical limit switch) to the DC 3-wire type transmitter, be sure to put a resistor to wiring. The recommended resistor is 1...2k ohm.

Example : + common wiring by RPTA-1803



Wiring methods for each product, refer to the User's Guide.

-Please refer to the instruction of User's guide supplied with the products for installation and operation.

-Please note that the cable length of an output sensor may not longer than 10m. The CE marking verifies that our products comply with the requirements of EMC directive. The surge test to an output sensor is not carried out. If the cable length of the output section will be used in the wiring of more than 10m, Please take care that the surge of excess is not applied.

Remote Sensor

Remote Coupler

Remote Power Supply

Wiring

Discontinued plans

Index

C028 DC 3-wire Detector type No. of signal : 12
RS12T-422 / RS12E-422_

■ NPN type

■ PNP type

