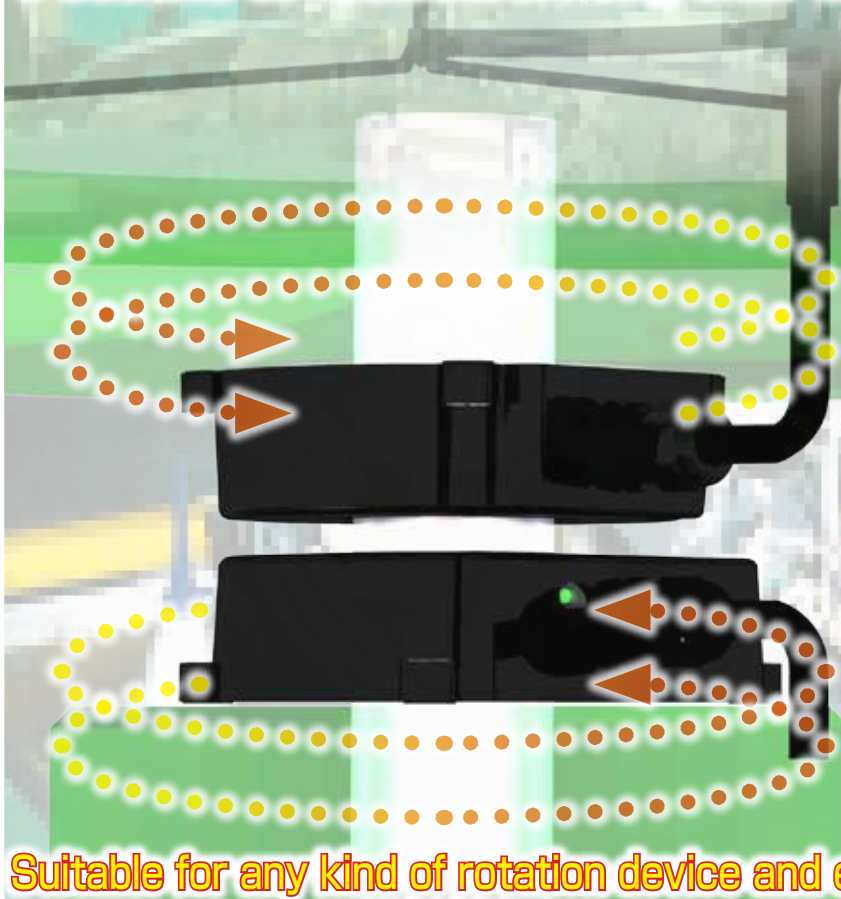
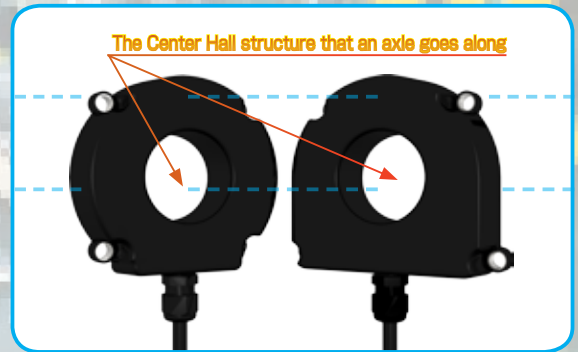


Possible to install to the axis! Center Hall structure!

Possible to feed wirelessly and transmits while turning!



- **Correspond to DC 2 wire type sensor**
proximity sensor, contacts switch
- **Prepared for feeding specifications**
Possible to feed 24V/2A
- **Wireless ⇒ long-life**
Because of the Non-contact, no abrasion of the point of contact makes it longer life.
- **Possible to install on to the axis**
Center Hall shape is possible to attach to existing device

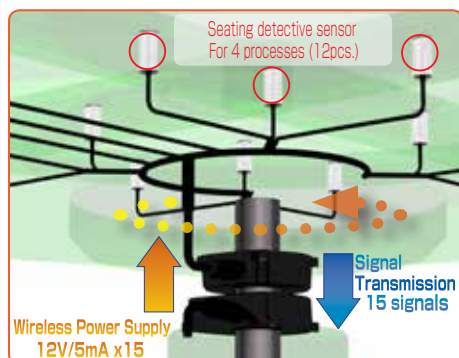


Suitable for any kind of rotation device and equipment such as Index table!!

Seating detection of the index table

Make it possible to **power supply** and **signal transmission** from **sensor** to the seating detective sensors.
 Index table that is difficult for the cable railing, **will be solved by the remote system.**

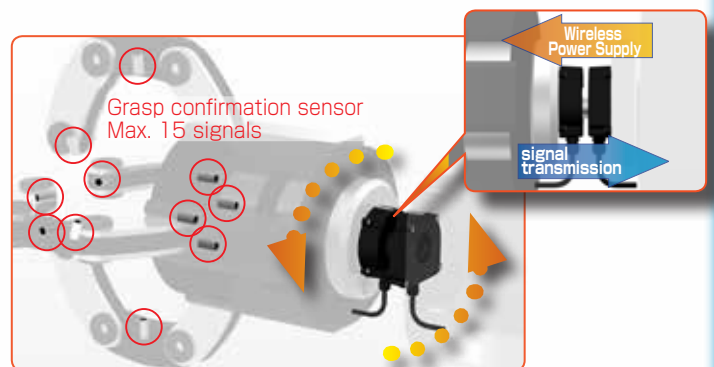
As long as install in a facing state by the axis, while rotating, it is able to **transmit sirement feeding to a sensor** and **seating signal** to PLC in a real time.



■ Usage example

An index table that rotates 90 degrees, has 4 processes. 1 process has 3 seating detection sensor and wireless Supply Power and transmits signal.

Grasp confirmation of the robot hand



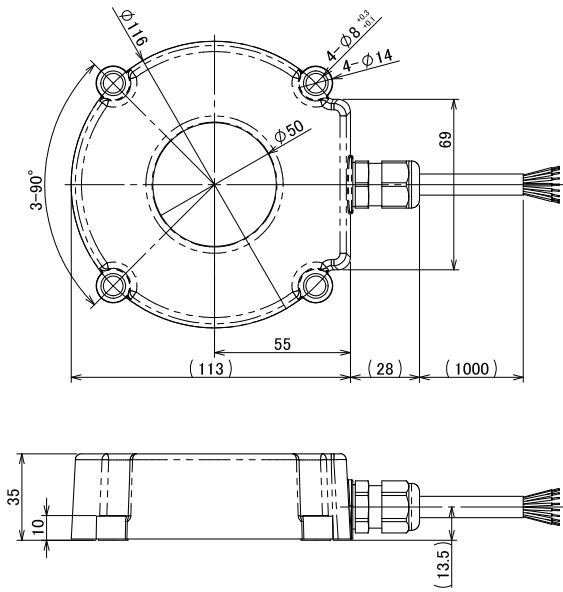
At the time of exchange and the work of the robot hand, a remote system plays an active part to detection sensor for grasp confirmation of the work.
 While wireless feeding to a detection sensor, a disconnection trouble dissolves in comparison with a cable. And ables to send a grasp detection signal to the control side.
 Suitable for the substitution of the slip ring.

■ Inside diameter ϕ 50/ medium size ring

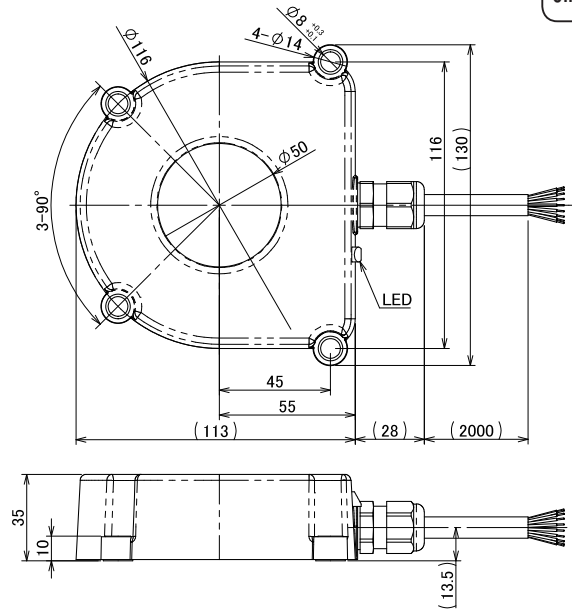
DC 2 wire type sensor x15

DC 2 wire Detector type

Transmitter



Output sensor



Distance
0...5mm

Transmitter	
Type code	DC 2-wire RS15T-R01D-PU-01
Drive voltage	12V \pm 1.5V DC
Drive current	5mA per sensor
No. of Input signals	15 signals
Operating distance	metal shaft
	without metal shaft
	0...5mm / center offset \pm 5mm
	0...6.5mm/center offset \pm 6.5mm
Operating temperature	0...+50°C
Protection class	IP67
Cable	PUR / ϕ 8.6 , 2x0.5mm ² + 16x0.18mm ²
Remark	This product is the CE non-acquisition

output sensor		
Type code	NPN output	RS15E-R02N-PU-02
	PNP output	RS15E-R02P-PU-02
Power supply	24V DC +10%-20% (incl. ripple)	
Current consumption	\leq 500mA	
No. of output signal	15 signals	
Load current	max.50mA (1 signal.)	
Frequency	20Hz	
LED (indication)	In zone indication (green)	
Operating temperature	0...+50°C	
Protection class	IP67	
Connecting cable	PUR / ϕ 8.6 , 2x0.5mm ² + 16x0.18mm ²	
Remark	This product is the CE non-acquisition	

Possible use of DC2 wire

Supply voltage	12V DC
Load current	less than 1 mA
Residual voltage	less than 3.5V
Load current	less than 5mA

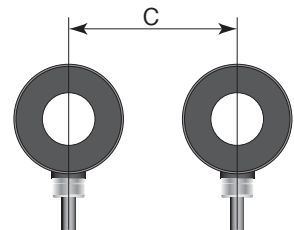
Please pick a correct operation sensor that suits from the left chart

Installation notes

In order to avoid influence of surrounding metal, or to avoid mutual influence between parallel-mounted sensors, keep the minimum free zone as described below.

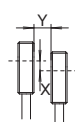
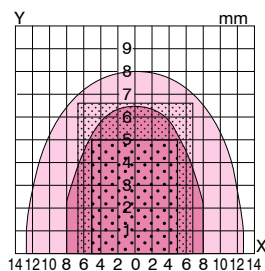
■ Surround Metal

■ Parallel Setting



Transmission Diagram (ex: Power Supply voltage 24V Time/Metal non implantation)

RS15T-R01D-PU / RS15E-R02N-PU, RS15E-R02P-PU



X: Center offset (mm)
Y: Operating distance (mm)

Operating area

- without metal shaft
- metal shaft

Type code	A	B	C
RS15T-R01D-PU			
RS15E-R02N-PU	100	35	300
RS15E-R02P-PU			

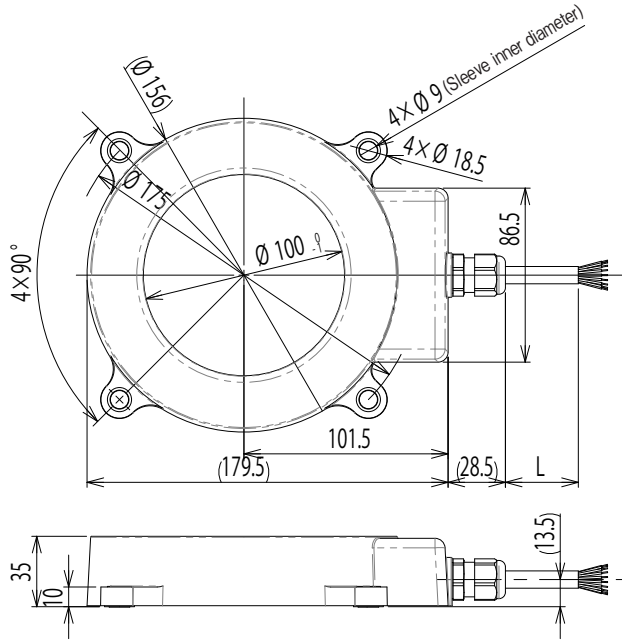
(mm)

■ Inside diameter ϕ 100/ large size ring

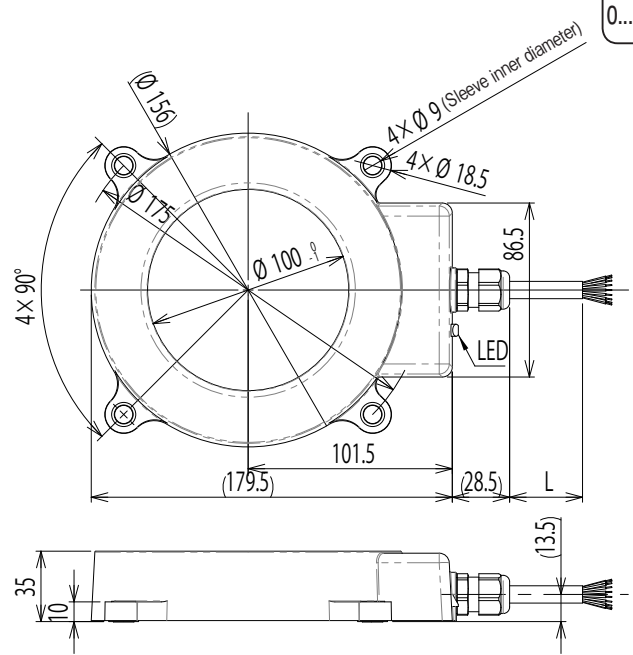
DC 2 wire type sensor x15

DC 2 wire Detector type

Transmitter



Output sensor



Distance
0...12mm

Transmitter	
Type code	DC 2-wire RS15T-R03D-PU-01
Drive voltage	12V \pm 1.5V DC
Drive current	5 mA per sensor
No. of Input signals	15 signals
Operating distance	metal shaft
	without metal shaft
	0...7mm/center offset \pm 3mm
	0...12mm/center offset \pm 7mm
Operating temperature	0...+50°C
Protection class	IP67
Connecting cable	PUR / ϕ 8.6 , 2x0.5mm ² + 16x0.18mm ²
Remark	This product is the CE non-acquisition

output sensor	
Type code	NPN output RS15E-R03N-PU-02
	PNP output RS15E-R03P-PU-02
Power supply	24V DC \pm 10% (incl. ripple)
Current consumption	\leq 500mA
No. of output signal	15 signals + 1 signal (Inzone)
Load current	max.50mA (1 signal.)
Frequency	20Hz
LED (indication)	In zone indication (green)
Operating temperature	0...+50°C
Protection class	IP67
Connecting cable	PUR / ϕ 8.6 , 2x0.5mm ² + 16x0.18mm ²
Remark	This product is the CE non-acquisition

Possible use of DC2 wire

Supply voltage	12V DC
Load current	less than 1 mA
Residual voltage	less than 3.5V
Load current	less than 5mA

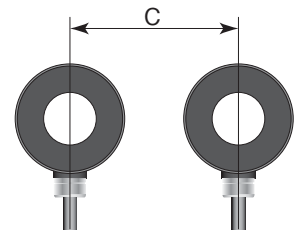
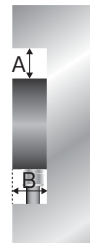
Please pick a correct operation sensor that suits from the left chart

Installation notes

In order to avoid influence of surrounding metal, or to avoid mutual influence between parallel-mounted sensors, keep the minimum free zone as described below.

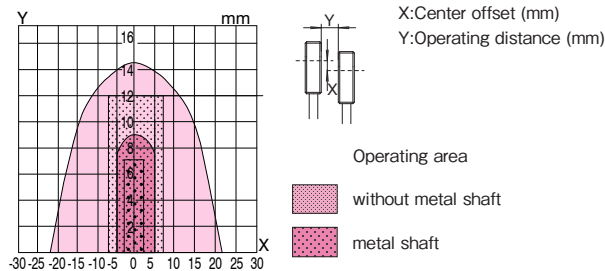
■ Surround Metal

■ Parallel Setting



Transmission Diagram (ex: Power Supply voltage 24V Time/Metal non implantation)

RS15T-R03D-PU / RS15E-R03N-PU, RS15E-R03P-PU



Type code	A	B	C
RS15T-R03D-PU			
RS15E-R03N-PU	200	35	400
RS15E-R03P-PU			

(mm)

■ Inside diameter ϕ 50/ medium size ring

24V/2A Feeding specifications

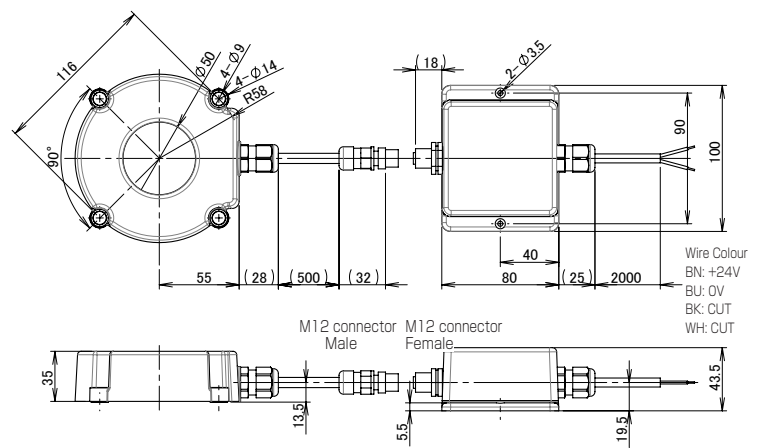
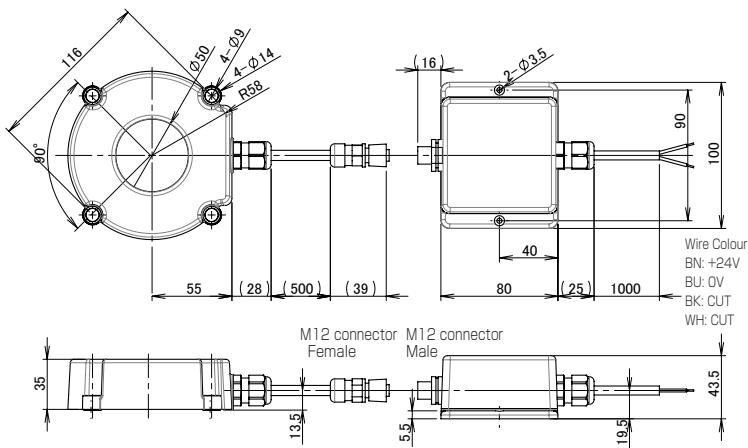
24V/2A Feeding specifications

Transmission head : RVHT-R01-CP0.5

Transmission amplifier : RVT-244-202-PU-01

Output Head : RVHE-R02-CP0.5

Output amplifier : RVE-244-2-PU-02



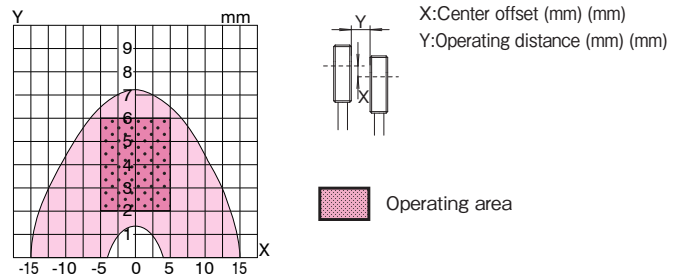
Type code	Transmitting head	RVHT-R01-CP0.5
	Transmission amplifier	RVT-244-202-PU01
Drive voltage	24V \pm 1.5V DC	
Drive current	\leq 2A	
Mouting	without metal shaft	with metal shaft
Operating distance	2...6mm	2...5mm
Center offset	\pm 5mm	\pm 4mm
Operating temperature	0...+50°C	
Protection class	IP67 (Only Head)	
Connecting cable	A transmission head: Connector cable Transmission amplifier : PUR ϕ 7 4x0.75mm ²	
Case material	A head: PUR, an amplifier: ABS	
Weight	A head: 470 g, an amplifier: 320 g	
Remark	This product is the CE non-acquisition	

Type code	Output head	RVHE-R02-CP0.5
	Output amplifier	RVE-244-2-PU02
Supply voltage	24V DC \pm 10% (incl. ripple)	
Current consumption	\leq 3.5A	
Operating temperature	0...+50°C	
Protection class	IP67 (Only Head)	
Connecting cable	A transmission head: Connector cable Transmission amplifier : PUR ϕ 7 4x0.75mm ²	
Case material	A head: PUR, an amplifier: ABS	
Weight	A head: 470 g, an amplifier: 420g	
Remark	This product is the CE non-acquisition	

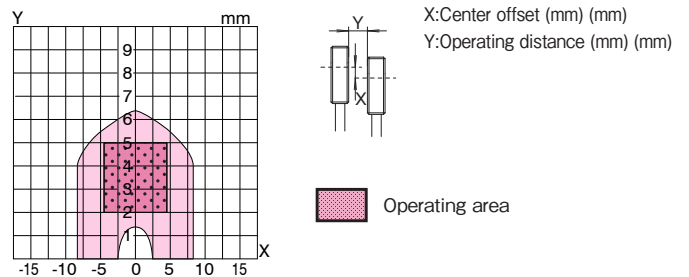
Transmission Diagram (ex: Power Supply voltage 24V Time/Metal non implantation)

RVHT-R01-CP0.5 / RVHE-R02-CP0.5

■ Inside of the head part, no metal shaft



■ Inside of the head part, metal shaft



Installation notes

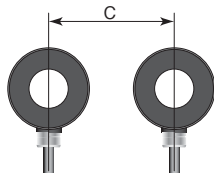
In order to avoid influence of surrounding metal, or to avoid mutual influence between parallel-mounted sensors, keep the minimum free zone as described below.

Type code	A	B	C
RHVE-R02-CP0.5	100	35	300
RHVT-R01-CP0.5			

(mm)

■ Surround Metal

■ Parallel Setting



Corresponds to various size, specifications

The ring shaped remote system can change and adjust the size of the axial and the specification of the sensor depending on the environment that the customer is looking for. Please feel free to contact us

Wireless Power Supply by
B & PLUS K.K.

Mail : b-plus-usa@b-plus-kk.com

Web : http://www.b-plus-kk.com

* Contents is subject to change without notice.

BN1519De

2017.03