

Power supply system
Wireless power supply
24VDC/2A!!

NEW

Protection class IP67

Non-metal dust*

OK!

24VDC
2A

Drive voltage/current
24VDC/2A

Remote part
RVT-21 1-22-PU-01

Base part
RVE-211-2-PU-02

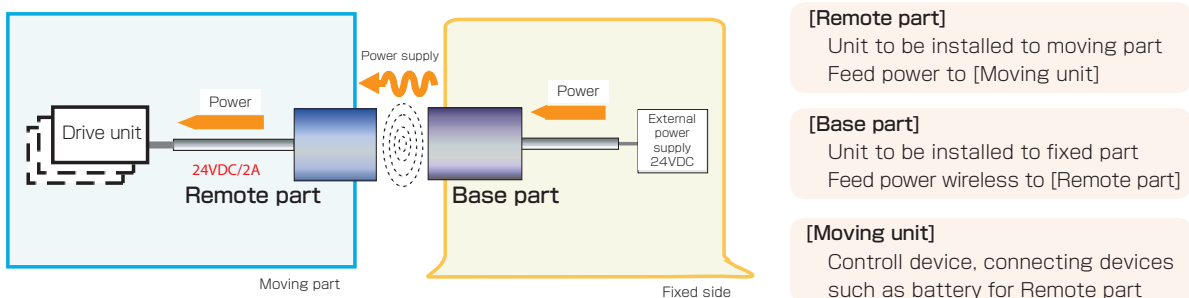
Supply 24VDC/2A!
It's twice as high to existing
type(24VDC/1A) in the same size !!

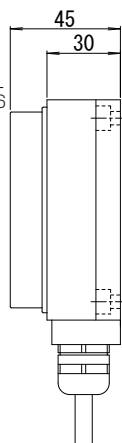
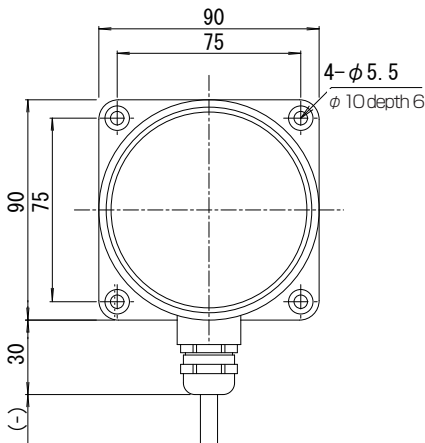
Non-metal partition
Glass
Plastic
OK!

*Don't adhere to metallic dust and chips.

■ **system configuration**

Remote power supply system feeds the power to the device with turn or move where it has difficulty in wiring



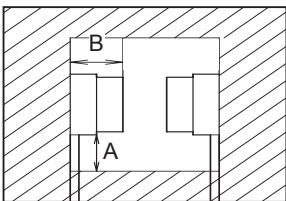


Type	Remote part	RVT-211-22-PU-01	
	Base part	RVE-211-2-PU-02	
Drive voltage	24V ± 1.5V DC		
Drive current	≤ 2A		
Center offset in the operating distance and drive current	Operating distance	Center offset	Drive current
	4...9mm	± 5mm	≤ 1A
	6...8mm	± 3mm	≤ 2A
Material	Housing	Aluminum+alumaiite finishing (Metal part)	
	Active surface	ABS + PBT	
	Cable	PUR / φ 6 2 x 0.75mm ²	
Operating temperature	0...+50°C		
Protection class	IP67		
Base part specifications	Operating voltage	24V DC ± 5%	
	Current consumption	≤ 4A	
	LED	---	

Mounting

Surrounding metal

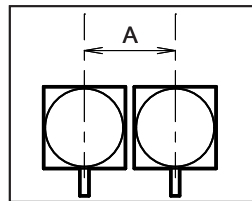
Head part is not flush mountable and in order to avoid influence of surrounding metal, please keep the minimum free zone as described below.



Type	A	B	
RVT-211...	50	45	(mm)
RVE-211...			

Mutual interference

When mounting head part in parallel, in order to avoid influence of mutual interference between parallel-mounted sensors, please keep the minimum free zone as described below.

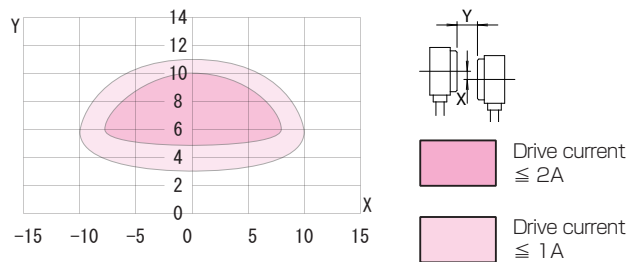


Type	A	
RVT-211...	300	(mm)
RVE-211...		

Note

- Please use drive unit which works with DC 24±2V
- The total current consumption of the drive unit do not exceed the value of drive current.
- Drive current may change by the operating distance and center offset.
(Please refer to the Typical transmitting diagram)

Typical transmitting diagram



Wireless Power Supply by
B & PLUS K.K.

Mail : b-plus-usa@b-plus-kk.com
Web : http://www.b-plus-kk.com

* Contents is subject to change without notice.