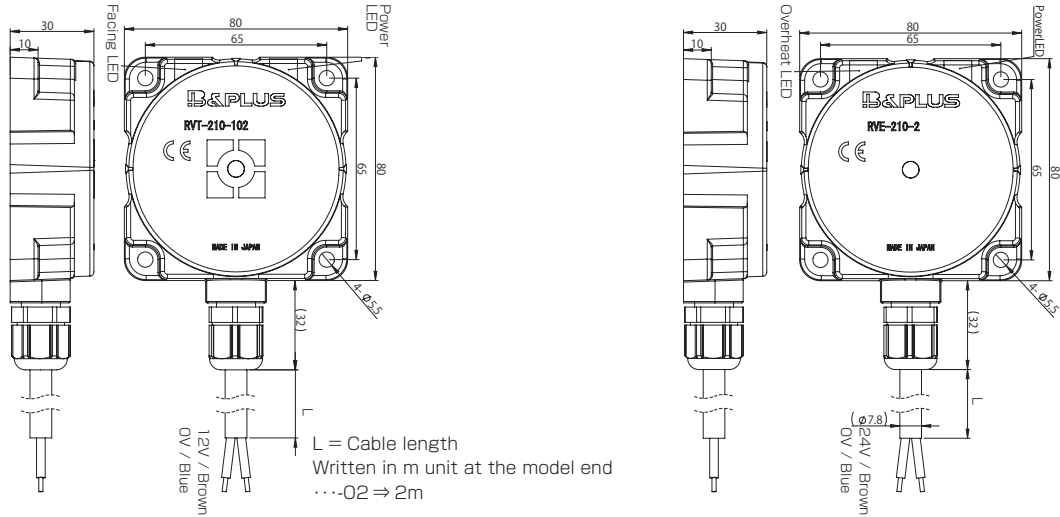


# Remote Power supply system 30W Power Supply

## Dimension



Remote (Passive head)	
Output logic	12V type
Type code	RVT-210-102-PU-__
Rating transmission distance	4...10mm
Center offset	±5mm
Drive voltage	12V ± 5%
Drive current	2.5A
LED (indication)	While feeding, LED is yellow, while facing, it is green LED.
Operating temperature	0...+50°C
Protection classsion	IP67
Connecting cable	PUR / $\phi$ 7.8mm / 2x1.5 mm <sup>2</sup>
Material Housing	PBT
Weight	Body 280g + Cable 82g/m

Base (active head)	
Type code	RVE-210-2-PU-__
Power supply	24V DC ± 10% (incl. ripple)
Current consumption	≤ 2A
LED (indication)	Indicate the power supply by LED lighting
Operating temperature	0...+50°C
Protection classtion	IP67
Connecting cable	PUR / $\phi$ 7.8mm / 2x1.5 mm <sup>2</sup>
Material Housing	PBT
Weight	Body 280g + Cable 82g/m

## Installation condition

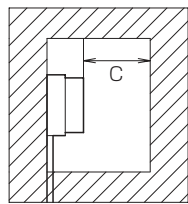
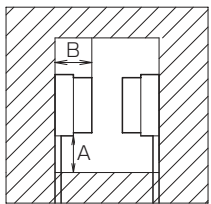
In order to avoid influence of surrounding metal, or to avoid mutual influence between parallel-mounted sensors, keep the minimum free zone as described below.

(Clamping torque of the screw ⇒ 1.5N·m)

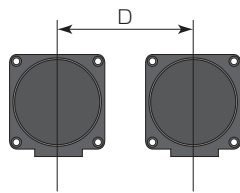
Type code	A	B	C	D
RVE-210-2-PU-__	50	30	30	300
RVT-210-102-PU-__				

(mm)

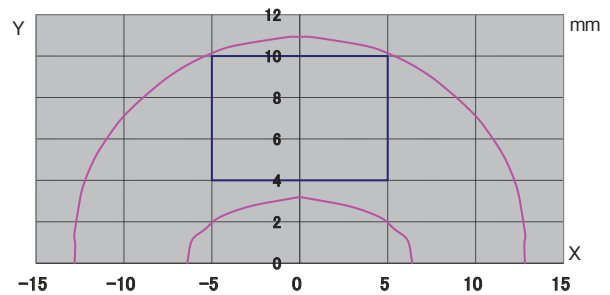
### Surround Metal



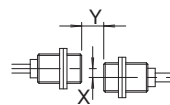
### Parallel Setting



## Center off-set and transmitting area diagram



Movement range	Center offset	Drive current
4...10mm	±5mm	≤ 2.5A (Specification RVT-210-102)



X: Center offset (mm)  
Y: Operating distance (mm)

## < Note >

Please avoid facing the base part with metal continuously.  
By heating the metal, damage of inside element can be caused.