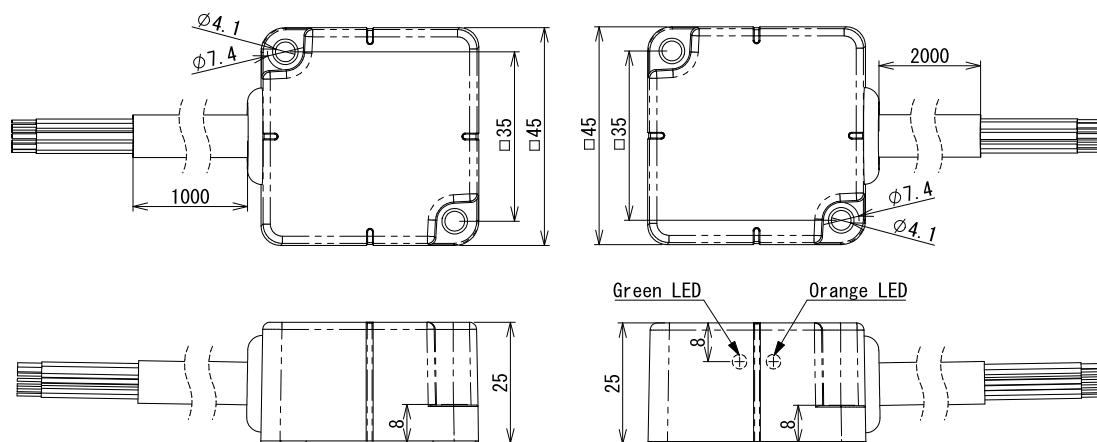


for max.12 sensors / Size : 45 x 45

Operating distance
2...5mm



Wiring C028 / P.120

Transmitter	
Type code	DC 3-wire RS12T-422-PU-01
Drive voltage	12V ± 1.5V DC
Drive current	≤ 230 mA
No. of Input signals	12 signals
Operating distance	2...5mm
Center offset	± 3mm
Drive current	230 mA
Operating temperature	0...+50°C
Protection class	IP67
Cable	PUR / φ 8.6 , 2x0.5mm ² + 13x0.18mm ²
Material Housing	ABS
Weight	Body 75 g + Cable 105 g x 1 m
Remark	

Output sensor	
Type code	NPN RS12E-422N-PU-02 PNP RS12E-422P-PU-02
Operating voltage	24V DC ± 10% (incl.ripple)
Current consumption	≤ 600mA
No. of output signal	12 signals
Load current	max.50mA (1 signal.)
Frequency of operation	60Hz
LED	Status LED (Green) , Output LED (Orange)
Operating temperature	0...+50°C
Protection class	IP67
Cable	PUR / φ 8.6 , 2x0.5mm ² + 13x0.18mm ²
Material Housing	ABS
Weight	Body 80 g + Cable 105 g x 2m
Remark	

If you use a DC-2 wire sensor, wire through a 1 to 2 KΩ resistance.

Applicable sensor

Supply voltage	12V DC
Total current consumption*	≤ 230 mA
Residual voltage	≤ 3.5V
Load current	---

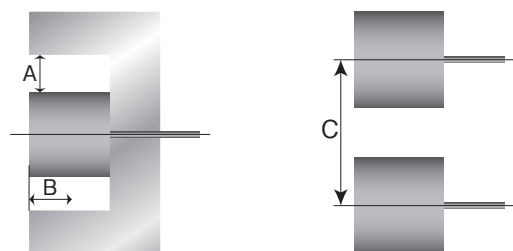
Use detection sensors which meet conditions in the left table.

*Total consumption current of connected sensors.

Installation notes

In order to avoid influence of surrounding metal, or to avoid mutual influence between parallel-mounted sensors, provide the minimum free zone as described below.

- Surrounding metal
- Parallel installation



Type code	A*	B	C
RS12T-422-PU			
RS12E-422N-PU	30	23	250
RS12E-422P-PU			

(mm)

* When you install it, a metal can have contact with one side of the body except for the sensing surface.

Typical Transmitting Diagram (Supply voltage at 24V / non-flush mount)

RS12T-422-PU / RS12E-422N-PU, RS12E-422P-PU

