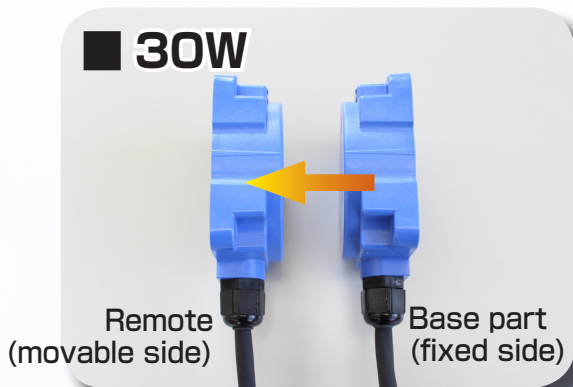


To find a better system

New Arrival of 30W • 120W Remote Power supply system!

Prepare in each one, for charge specifications and feeding specifications.



**Just by facing each other
 Wireless Power supply or Wireless Charging!**

- It is more compact than the usual charge • feeding remote!
- Because there is no amplifier, the setting is simple! Simple space!
- LED indication is added and more convenient! The control function is equipped!

It is OK in such environment!

Secure using IP67!

Adhesion of a dirt and the water droplet.



Non - metal dust *

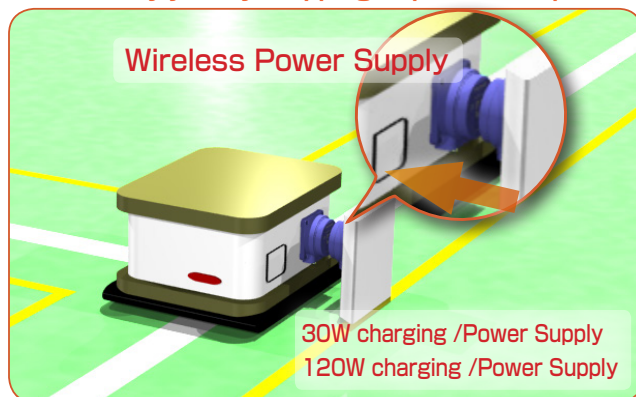


Nonmetal partition
 (glass • plastic)



**Charge to a lead storage battery of the AGV
 (automatic carrier)**

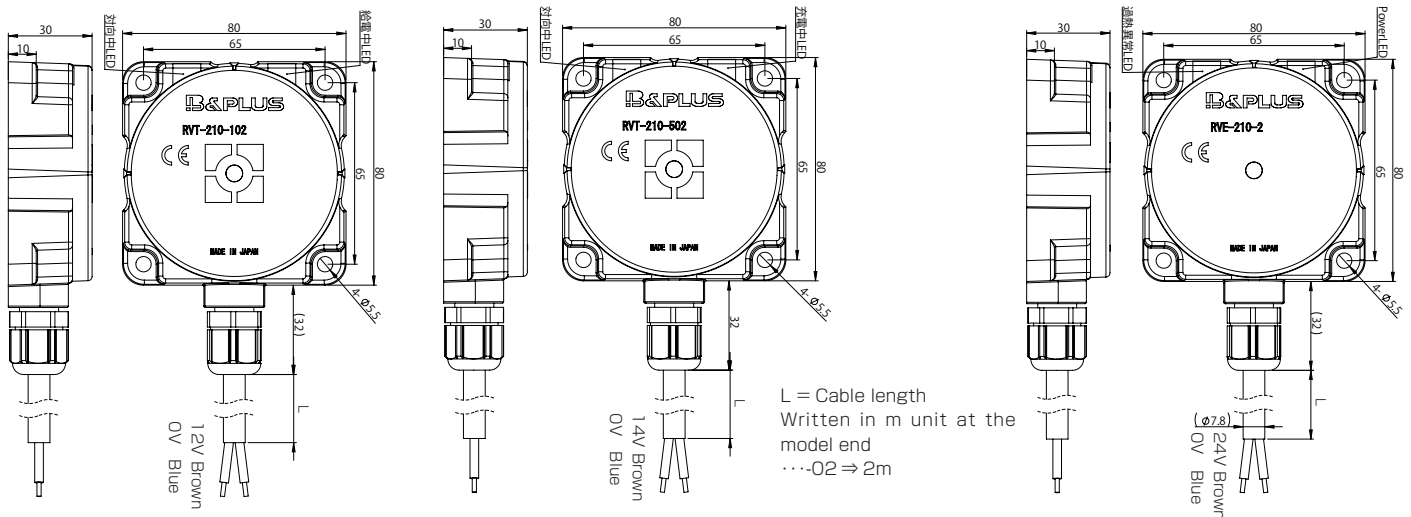
- Because there is no electrical contact, it is safe during the motion as well.
- Because it is wireless, it can be charged automatically just by stopping at prescribed position.



*Don't adhere to metallic dust and chips.

Remote Power supply system 30W charging /Power Supply

Dimension



L = Cable length
Written in m unit at the model end
...02 ⇒ 2m

Remote	
Type code	RVT-210-102-PU-_, RVT-210-502-PU-_
Operating distance	4...10mm
Center offset	± 5mm
Drive voltage	12V ± 5%
Drive current	2.5A
LED (indication)	While feeding, LED is yellow, while facing, it is green LED.
Operating temperature	0...+50°C
protective construction	IP67
Cable	PUR / φ 7.8mm / 2x1.5 mm ²
Material Housing	PBT
Weight	Body 280g + Cable 82g/m
Remark	Wireless power supply only Charge specifications (for exclusive use of the lead storage battery)

Base	
Type code	RVE-210-2-PU-_
Power supply	24V DC ± 10% (incl. ripple)
Current consumption	≤ 2A
LED (indication)	Indicate the power supply by LED lighting
Operating temperature	0...+50°C
protective construction	IP67
Cable	PUR / φ 7.8mm / 2x1.5 mm ²
Material Housing	PBT
Weight	Body 280g + Cable 82g/m
Remark	

< Note >

Please avoid facing the base part with metal continuously.
By heating the metal, damage of inside element can be caused.

Installation notes

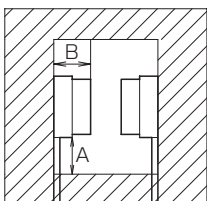
In order to avoid influence of surrounding metal, or to avoid mutual influence between parallel-mounted sensors, keep the minimum free zone as described below.

(Clamping torque of the screw ⇒ 1.5N·m)

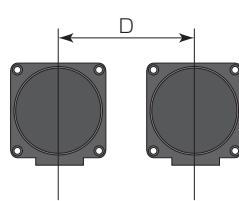
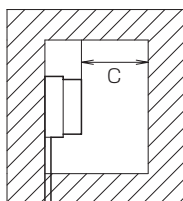
Type code	A	B	C	D
RVE-210-2-PU-_	50	30	30	300
RVT-210-102-PU-_				
RVT-210-502-PU-_				

(mm)

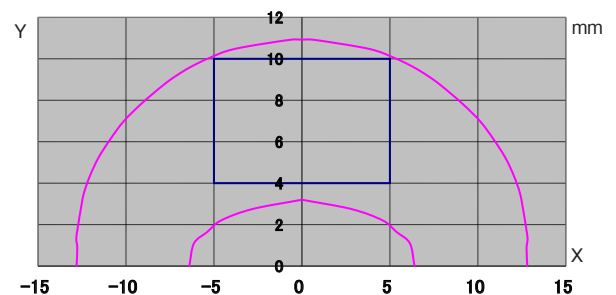
■ Surround Metal



■ Parallel Setting



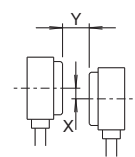
Transmitting area diagram



Movement range	Center offset	Drive current
4...10mm	± 5mm	≤ 2.5A (Specification RVT-210-102)
4...10mm	± 5mm	≤ 2.0A (Specification RVT-210-102)

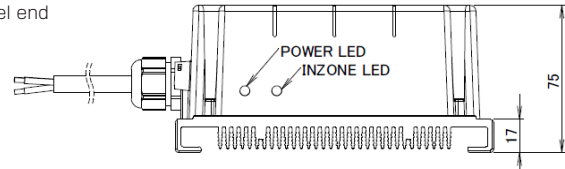
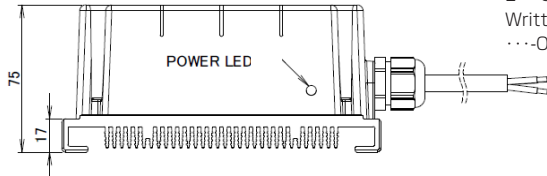
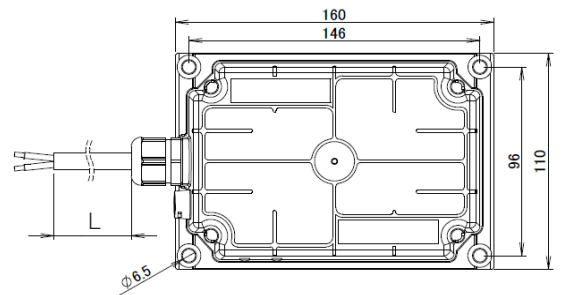
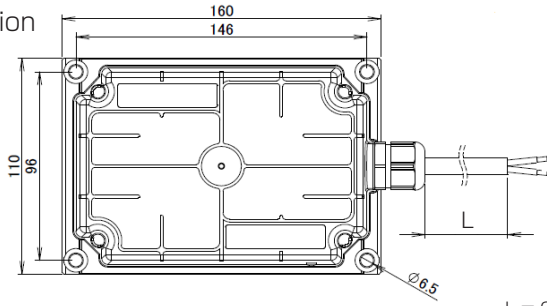
X : Center offset (mm)

Y : Operating distance (mm)



Remote Power supply system 120W charging /Power Supply

Dimension



L = Cable length
Written in m unit at the model end
...02 ⇒ 2m

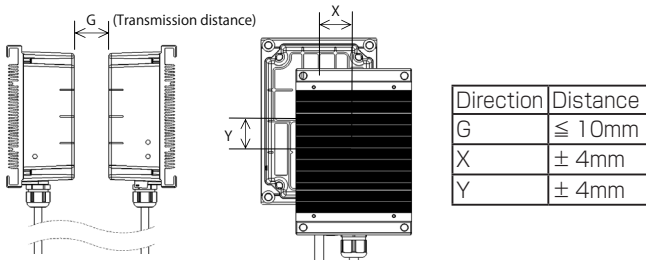
Type code	RVT-433-205-PU_	RVT-433-404-PU_
Cable color:Brown	24V	28V
Cable color:Blue	GND	GND

Type code	RVE-433-2-PU_
Cable color:Brown	24V Power supply
Cable color:Blue	GND

Remote		
Type code	RVT-433-205-PU_ (Charging)	RVT-433-404-PU_ (Power Supply)
Operating distance	0...10mm	0...10mm
Center offset	± 4mm	± 4mm
Drive voltage	24V ± 2V	≤ 28.5V DC(Change by the battery voltage)
Drive current	Max 5A	≤ 4A(Change by the battery voltage)
LED (indication)	Green: POWER (output)	Green: POWER (output)
Operating temperature	0...+50°C	
protective construction	IP65	
Cable	PUR / φ 8mm / 3x2.5 mm ²	
Weight	1.6kg + Cable 150g/m	
Material	case:PPS / heat sink:Aluminum	
Remark	Wireless power supply only	Charge specifications (for exclusive use of the lead storage battery)

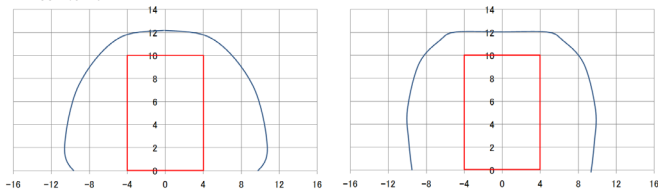
Base	
Type code	RVE-433-2-PU_
Power supply	24V DC ± 10% (incl. ripple)
Current consumption	≤ 8A
LED (indication)	Green: POWER (Electricity on by lightning), Orange: INZONE
Circuit protection	Reverse connection protection
Operating temperature	0...+50°C
protective construction	IP65
Cable	PUR / φ 8.6mm / 3x2.5 mm ²
Weight	1.6kg + Cable 150g/m
Material	case:PPS / heat sink:Aluminum

Transmitting area diagram

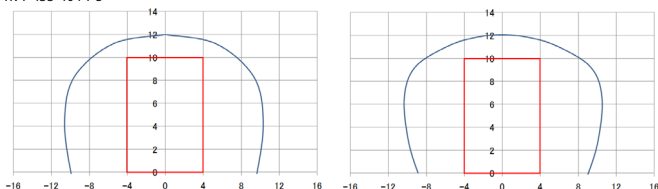


Center offset of the base part and remote part, please be installed so that the X-axis · Y-axis is within 4mm respectively.

RVT-433-205-PU



RVT-433-404-PU

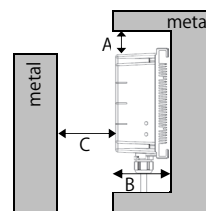


Blue line : A typical example (Supply voltage at 21.6V/non-flush mount)
Red line : Distance

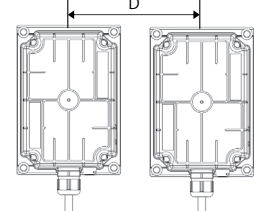
Installation notes

In order to avoid influence of surrounding metal, or to avoid mutual influence between parallel-mounted sensors, keep the minimum free zone as described below.

Surround Metal



Parallel Setting

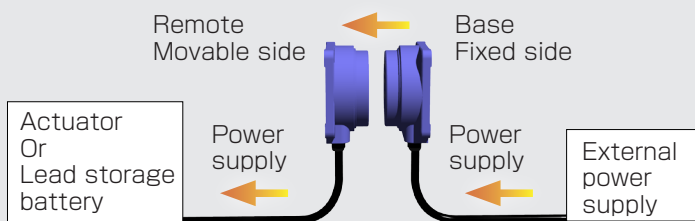


Type code	A	B	C	D
RVE-433-2-PU_			45	
RVT-433-404-PU_	100	75	/	300
RVT-433-205-PU_				

(mm)

< Note >

- Because this product is to prevent malfunction or failure due to noise, please be attached so that the heat sink is grounded to the frame ground.
- In order to meet the EMC (IEC61000-4-3.Radiation radio frequency electromagnetic field immunity) standards, the ferrite core clamp of bundled, please attach two within 20cm from the body. The number of turns is two turns.
- If you want to extend the cable is in consideration of the voltage drop, please use a sufficiently thick cable.
- Please do not face the base part to a metal at all times to avoid metal overheating or damage of the omponents.
- Please when the power selection is in consideration of the inrush current.



※ RVT-210-102 と RVT-433-205 Feeds only to a drive unit

Remote Power supply system 30W/120W

Wireless feeds the remote region that is connected to movable side from base region connected to the outside power supply which is installed to the fixed side and supplies electricity to a drive unit connected to remote region and a lead storage battery.

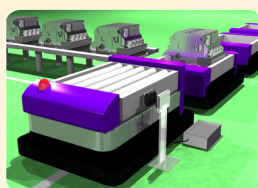
Remote Power supply system Lineup

Remote Power supply system

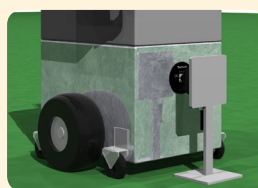
Wireless Power supply, Wireless Charging



~ Application ~



Battery charge of AGV



Battery charge of humanoid robot



Charge to a robot for agriculture

■ Wireless Power Supply



■ Power supply only
24V DC / 1A(24W)



■ Power supply only
24V DC / 2A(48W)



■ Power supply only
24V DC / 5A(120W)

■ Wireless Charging



■ Lead battery only
30V DC / 7A(210W)



■ lithium-ion battery only
29.4V DC /
7A(210W)



■ Lead battery only
30W DC
120W DC type

Wireless Power Supply by
B & PLUS K.K.

Mail : b-plus-usa@b-plus-kk.com

Web : <http://www.b-plus-kk.com>

* Infor may change the mention contents such as specifications without a notice.
Thank you for understanding